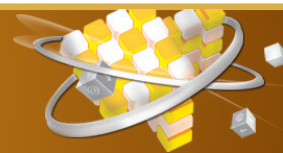
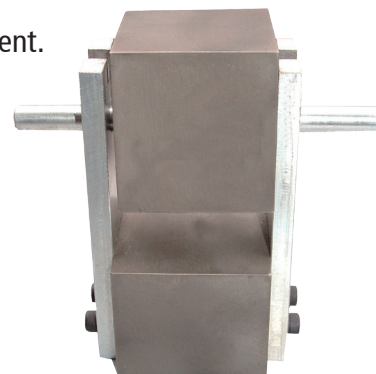


Mortar Compression Test Attachment

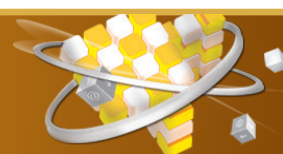


This is a pressurization device for compression strength test of hydraulic cement.



Model	QRCTA-901
Material	Steel
Sample	40 × 40 × 160 mm
Size	40 × 40 mm
Weight (kg)	6

Briquette Tension Tester



This is a digital type tester to measure mortar tension strength.



Model	QRDBT-901
Type	Digital
Max. Load Capacity (kN)	5
Min. Load Capacity (N)	0.5
Accuracy	Within ± 0.5 % of the indicated load
Operation Type	Manual volume control
Load Sensor	Load cell
Test Speed	1 ~ 20 mm
Tension Gripe	1 set
Ram Stroke (mm)	100
Dimension (mm)	800 × 400 × 1 000
Weight (kg)	750

Briquette Mold



This is a mold to make hydraulic cement sample for tension strength test.



Model	QRBRM-901
Type	3continuous type
Material	Brass
Size	25.4 × 25.4 × 76.2 mm
Weight (kg)	5